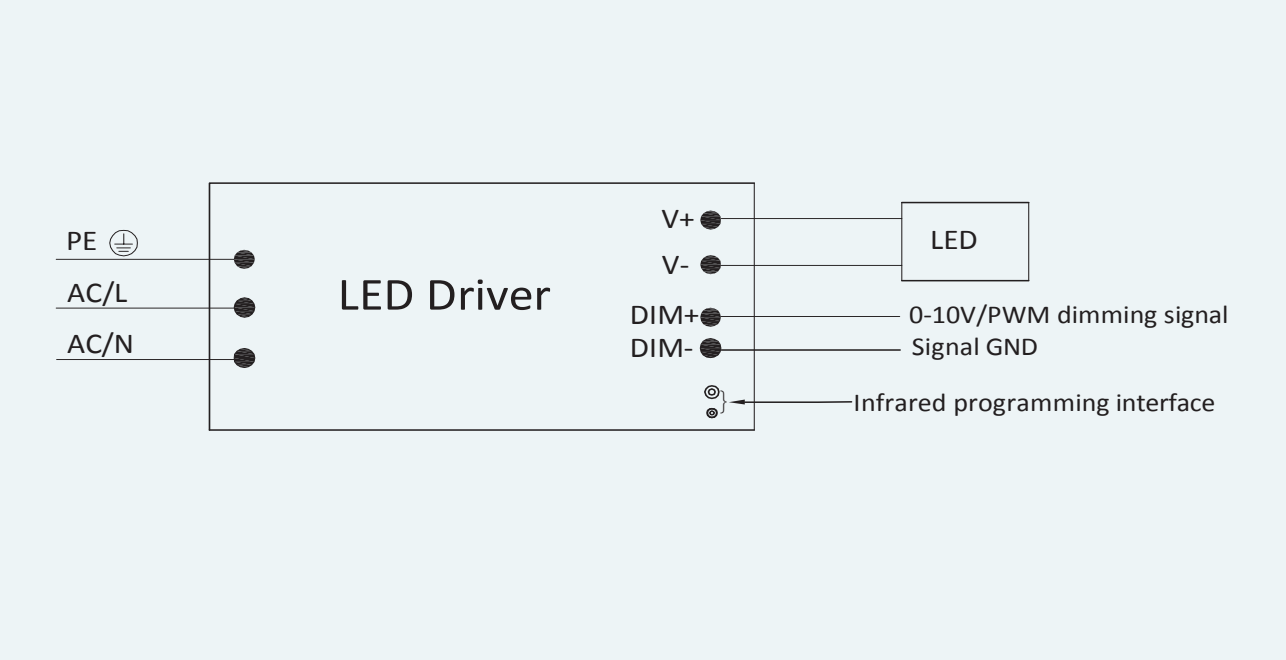


Intelligent Control

Intelligent Control Interface



Configure Output Current Via Controller



- 1. Inserting receiving terminal of the remote controller into the bigger hole site of side plate of the power supply, shown as the left picture.
- 2. First, press the key "ON" to unlock, then press the function key to adjust current what you need within 10S.
Operation instruction:
 - ✖ 10%-100% : Different rate of maximum output current.
 - ✖ +, - : Current fine tuned-keys, every step is 1%.
 - ✖ ON : The key of opening the controller.
 - ✖ OFF : The key of setting the minimum current.
 - ✖ SET : Reserved key, no function by now.

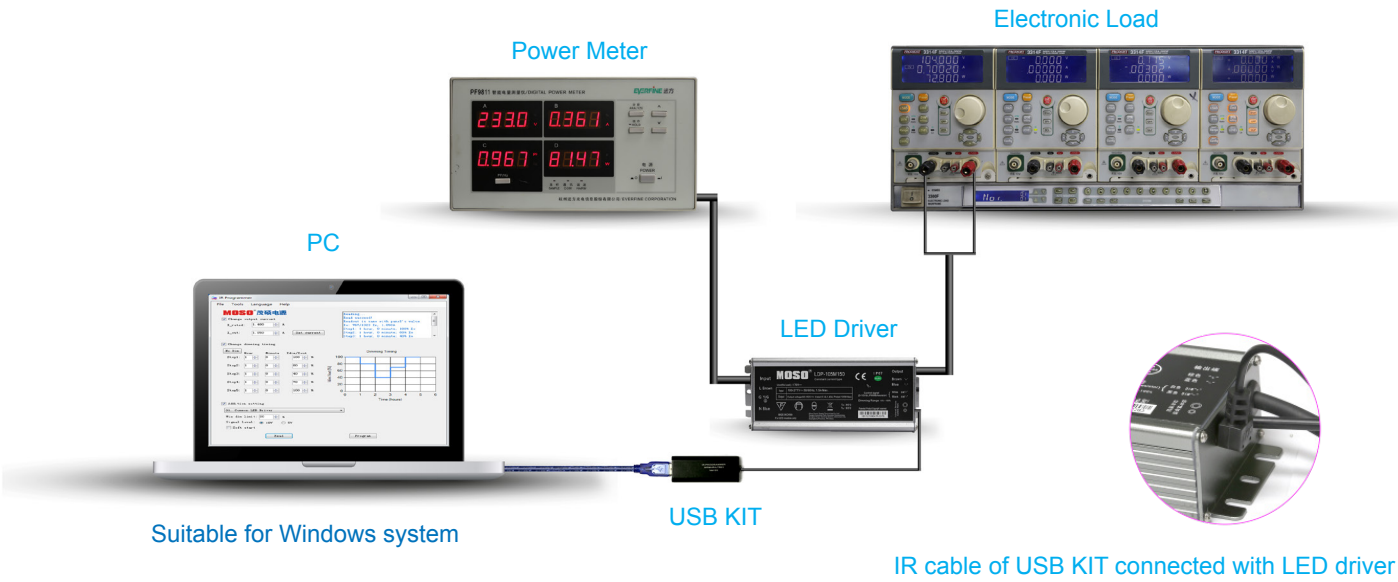
Warning: Please do not continuously press"+" to avoid the over power protection and unstable output.

Connection of dimming wire

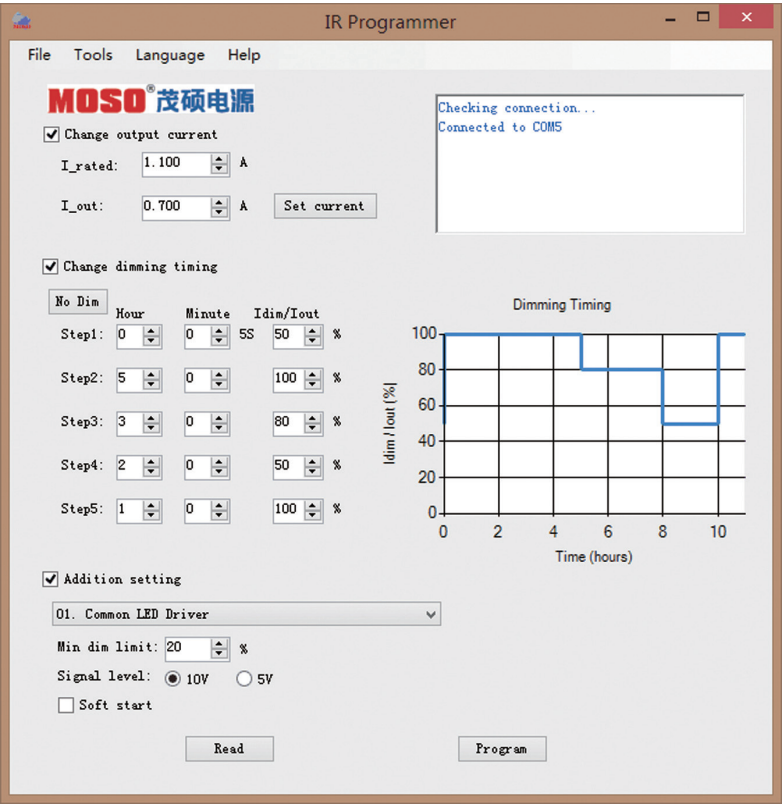
	0-10V dimming	PWM dimming
Positive of dimming signal	White—DIM+	White—DIM+
Ground of dimming signal	Black—DIM-	Black—DIM-

Intelligent control suitable for LDP, LCP, LHP series.

Programming Operation Guide



Software Operation Guide



In both Chinese and English interface.

- 1) Change output current;
 - 2) Change dimming timing;
 - 3) Addition setting
- Set min. dim value;
- Set signal level can be 5V or 10V;
- Set soft start;
- 4) Read setting.